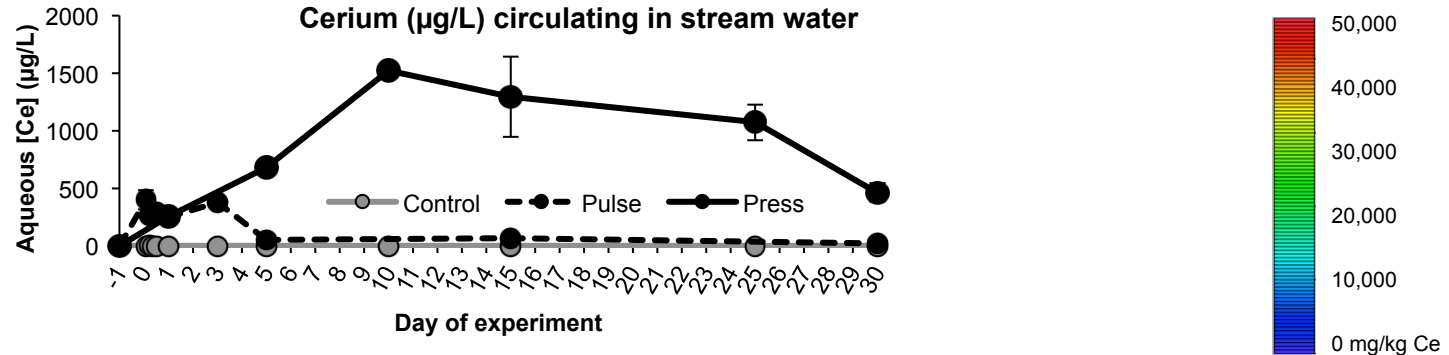


Environmental fate and transport of CeO₂ nanoparticles in stream mesocosms

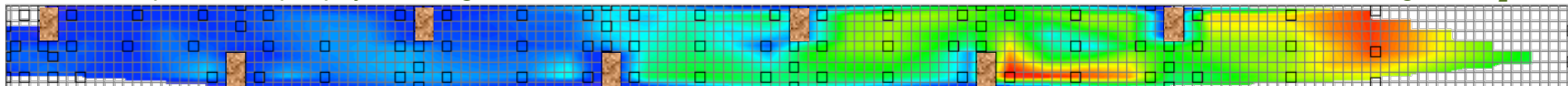
Leanne Baker¹, Ryan S. King¹, Greg Lowry², Jason Unrine³, and Cole W. Matson¹

¹Baylor University, ²Carnegie Mellon, ³University of Kentucky

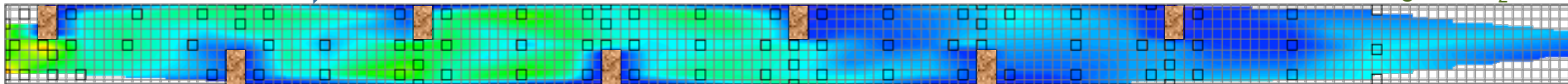


Cerium deposition in periphyton along stream riffle section

Pulse Addition 10 mg/L CeO₂ NP



Press Addition 10 mg/L CeO₂ NP



- CeO₂ NPs added via press addition are more stable in the water column, resulting in substantially higher water concentrations
- Pulse and press additions result in significantly different patterns of NP deposition

